

GENERAL PURPOSE GLASS MICROSPHERES

- narrow distribution sieve fractions

- Over 40 grades from 32µm – 3.5mm
- One of the largest ranges of sieve fractions
- High performance sonic sieving process
- 90% within the nominal particle size distribution
- Sieves used calibrated to NPL and NIST standards

General Purpose Beads

Whitehouse Scientific produces an extremely wide variety of glass microspheres for many applications from ultra-narrow, high sphericity beads used for cosmic dust simulation experiments or nuclear fallout studies to very basic beads used for less stringent applications such as oil absorbers, plastic fillers and geological or sedimentation research.

January 2009

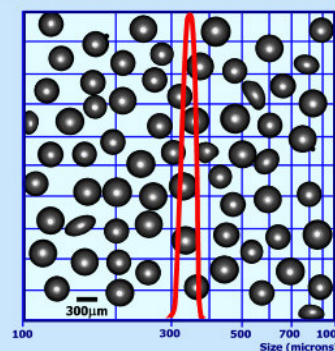
Sieve Fraction (µm)	Weight per Jar (g)	Catalogue Number	£	€*	\$*
32 – 45	100	GP0042	40	48	64
45 – 53	100	GP0049	40	48	64
63 – 75	100	GP0069	30	36	48
75 – 90	100	GP0083	30	36	48
90 – 106	100	GP0098	30	36	48
106 – 125	200	GP0116	35	42	56
125 – 150	200	GP0138	35	42	56
150 – 180	200	GP0165	35	42	56
180 – 212	200	GP0196	35	42	56
212 – 250	200	GP0231	35	42	56
250 – 300	200	GP0275	30	36	48
300 – 355	200	GP0328	30	36	48
315 – 355	200	GP0335	45	54	72
350 – 400	200	GP0375	45	54	72
355 – 425	200	GP0390	30	36	48
425 – 500	200	GP0463	30	36	48
500 – 560	200	GP0530	45	54	72
500 – 600	200	GP0550	30	36	48
560 – 600	200	GP0580	45	54	72
600 – 630	200	GP0615	45	54	72
600 – 710	200	GP0650	30	36	48
710 – 850	200	GP0780	30	36	48
850 – 1000	200	GP0925	30	36	48
1000 – 1180	400	GP1090	35	42	56
1120 – 1180	400	GP1150	55	66	88
1250 – 1400	400	GP1325	35	42	56
1400 – 1600	400	GP1500	55	66	88
1600 – 1800	400	GP1700	55	66	88
1700 – 1800	400	GP1750	35	42	56
1800 – 2000	400	GP1900	55	66	88
2000 – 2400	400	GP2200	35	42	56
2800 – 3200	400	GP3000	35	42	56
3360 – 3550	400	GP3455	35	42	56



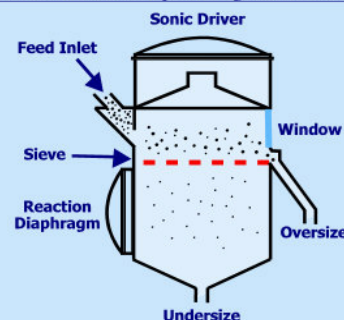
In the first stage of refinement, broad distribution glass microspheres are very accurately sieved using a variety of sieving processes to produce extremely sharp cuts from over 4mm down to 38 microns. The process aims to leave approximately 90% of the distribution within the nominal size range.

Every sieve used in the process is calibrated against international standards such as NIST or NPL so there is no possibility of any errors arising from the use of incorrectly labeled sieve meshes.

Microscope analysis of a 300-355µm sieve fraction



Sonic Siever for dry sieving down to 20µm



The complete particle size distribution of these General Purpose Glass Microspheres are not traceable to any International standard, only the start and finish points of the distribution.

There may be slight variations from batch to batch. They are particularly useful as general purpose research microspheres or spacer beads in a range of lower grade applications. They may also be used as a preliminary material with which to assess the performance of particle size equipment, after which a higher specification traceable standard may be used as the final calibrant.

* Currency conversions are provided as a guide and are subject to fluctuation